

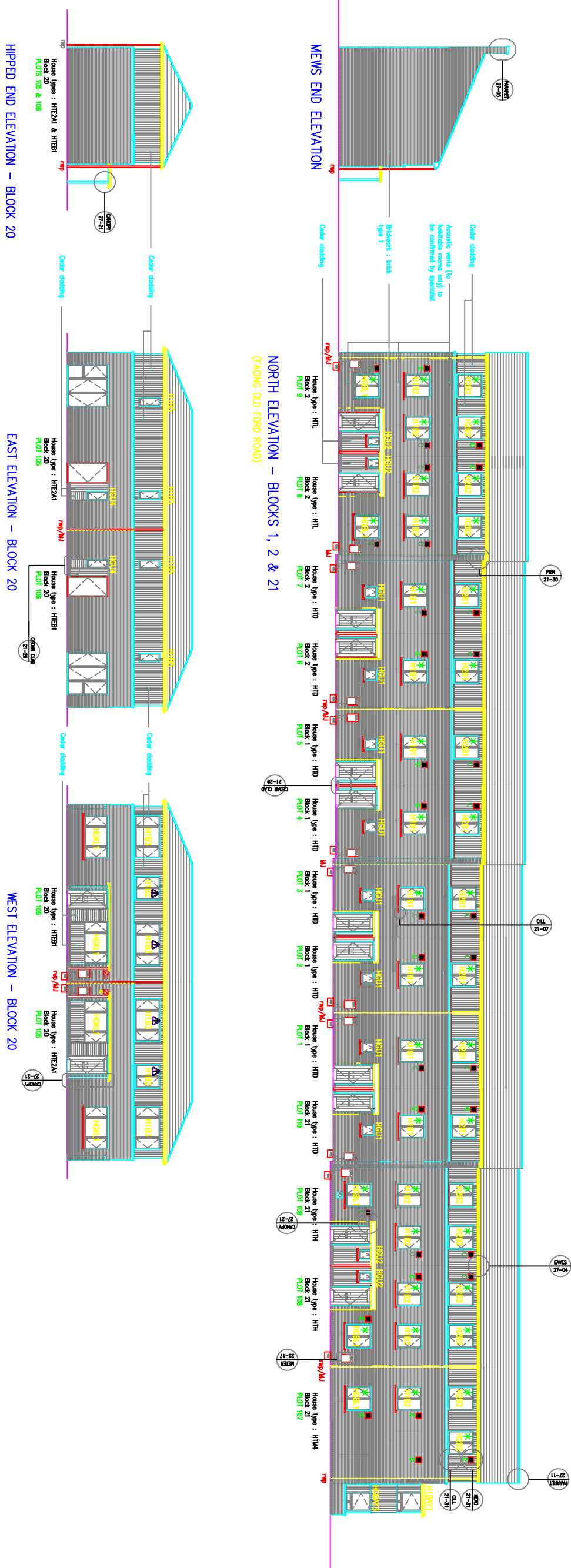


FOR DOOR REFERENCES SEE DOOR SCHEDULE (S13) SERIES
FOR DOOR ELEVATIONS SEE DWG No. S(3)28

NOTES:

- Brick Type 1 – Airedall Wall Yellow – stock by 'Yellow Brick' or similar approved.
- Brick Type 2 – Smead Dean Badgers Yellow – stock by 'Yellow Brick' or similar approved.
- String course – Non-standard spaced stretcher bricks with non-standard stretcher corner piece – Brick Type 1
- Brickwork below DPC – Blue Engineering Brick Class B.
- Cowdley – Cowdley to all top floor flat & house types except a block 9, 14 & 20. Cowdley to ground story to be stopped clear of joints. Continuous stone sill below cowdley cladding. Manufacture Y777
- Balconies – Mild galvanized steel balustrading
- Windows – Timber window sashes white
- Cills – Pre-cast stone cills where windows in brickwork (see schedule)
- Roof – 'HT' Thinsul® flat fibre cement sashes (size 600x300, colour: Blue/Black) by Eternit® or similar approved.
- 15' Roof (cl. near to Plot Type A & K2 and to Storey houses block 9, 14 & 20) – Insulation Cornish 'Emulcor' sashes by Thinsul® or similar approved.
- Lightning Protection – required to 3 storey houses & above, refer to W&E drawings.
- Fenestration – Softwood sashes with undercoated Dunn Weatherboard sashes.
- Roofs – Block down a POU downpipe with 'Mystery Downflow' outlet or similar approved.
- Dormers & French Roofs – Flat roofs finished in sheet metal or similar approved. Cowdley to match main roof.
- Acoustic Air Vents – applicable to Old Ford Road front elevation (blocks 1, 2, 21) to bedrooms only and to blocks 31&32 but at rear to habitable rooms only.
- For roof penetration refer to block roof plans
- M/A's – MOVEMENT JOINTS ARE GENERALLY LOCATED BEHIND ALL R/W's. (ENGINEER TO COMMENT)

NORTH ELEVATION – BLOCKS 1, 2 & 21
(FACING OLD FORD ROAD)



HIPPED END ELEVATION – BLOCK 20

EAST ELEVATION – BLOCK 20

WEST ELEVATION – BLOCK 20

Sharon J. Ross, MBIAT.
Snr. Architectural Technologist. Mobile: 07960 152 845
Project: Old Ford, Traditional construction

